



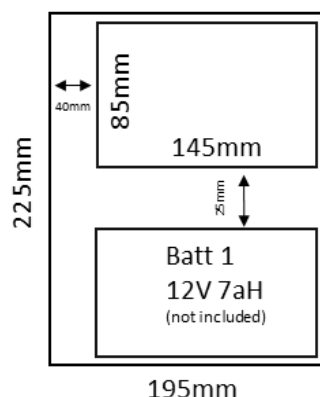
# 12VDC 1AMP POWER SUPPLY

**POWER SUPPLIES**

Manufacturer of access control systems, including a market leading range of power supply units.



**1201SM-1**



SPECIFICATION	FEATURES	OTHER PRODUCTS
---------------	----------	----------------

12V PSU

- Full current to load
- 13.8VDC regulated output
- Additional battery charging
- Deep discharge protection
- Current limiting
- Short circuit protection
- Mains transient protection
- Compliant to EMC EN61000-6-1 & 3
- Can house a battery up to 12V 9Ah

12V PSU

- Switchmode technology
- Mild steel construction
- White powder coated
- LED indicators (mains, battery, output)
- Separate fused mains connections
- Full electronic protection
- On board tamper protection
- Converts power more efficiently (switch mode)
- Multiple cable entry (inc rear)
- Wiring instructions included



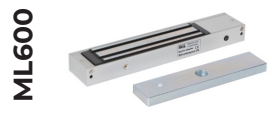
DIMENSIONS	CONTENTS
------------	----------

12V Boxed PSU's

- 225H x 196W x 75D (mm)
- 1.46kg (Boxed)
- 1.32kg (Unboxed)

1201SM-1

- Power Supply Unit
- 2 x Battery Leads (1 x Red, 1 x Black)
- 1 x Earth Lead - Connected
- Wiring instructions included



Manufactured by a BSIA Member